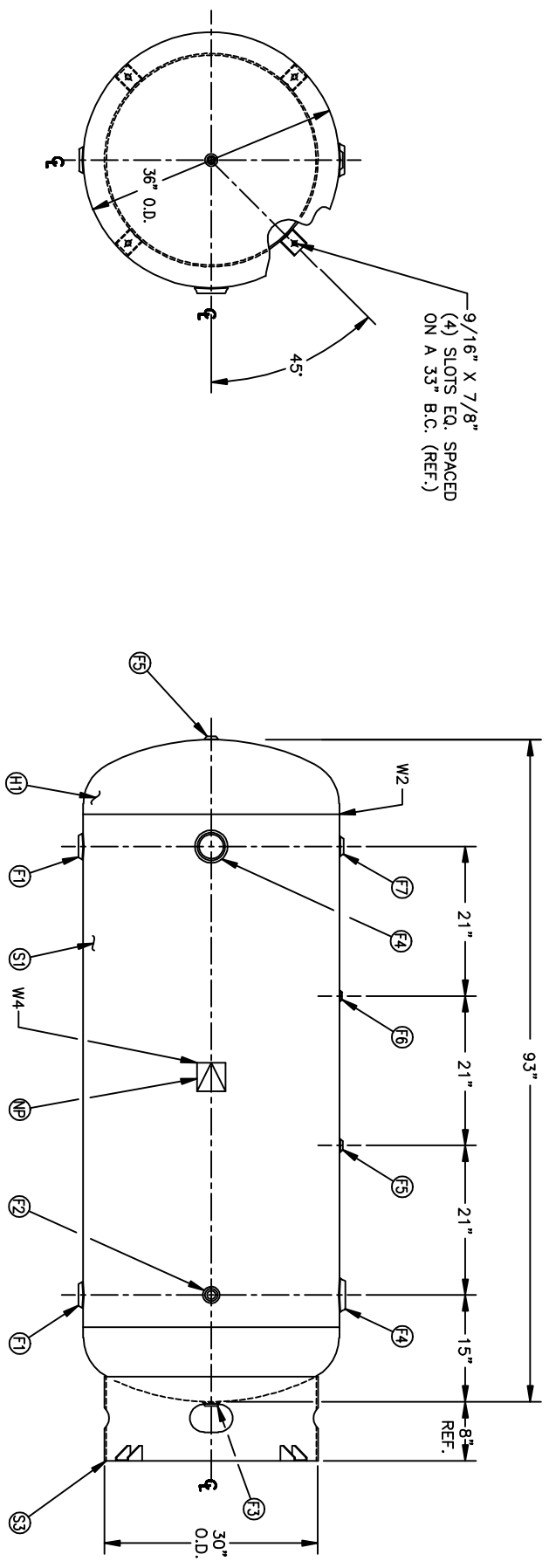



FIND NO.	NPT SIZE
F1	2
F2	1
F3	1
F4	3
F5	1/2
F6	1/4
F7	1 1/2



DATE	BY	REVISION	APP	REF	REV	NOTES

SPECIFICATIONS	
O.D. 36	LENH. 93
MAWP 200	PSI @ 450 °F
CRN 1.8908.5C	
WELD DETAILS: M-1932	
STD. TOLERANCES (UNLESS OTHERWISE NOTED): M-2461	
QAL 400	S.A. 78.5.3
WT. 935	CULFT. 50.33
PER DATE OF DMC/LAST REV	
CODE ASME UW-12(c)	

	36" X 93" VERT. STANDARD AIR RECEIVER
<small>Q.A. 3000</small>	<small>SCALE: NONE</small>
<small>DRAWN BY: _____</small>	<small>DATE: _____</small>
<small>APP. BY: _____</small>	<small>DATE: _____</small>
<small>DRAWING NO. 302433</small>	