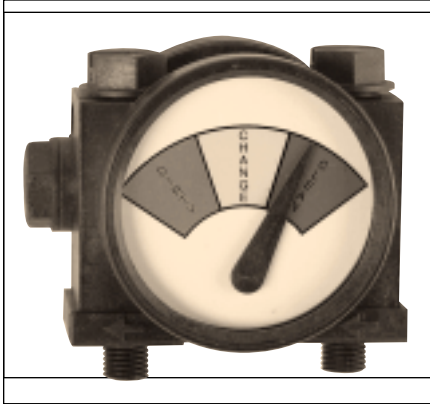


Pressure Gauges & Accessories

Delta 'P' Gauge



Reed Switch Specifications			
Max. Voltage Switching	Max Switch Current	Max. Carrying Current	Contact Rating
100 AC/DC	.30 AMPS	1 AMP	10 VA

FUNCTION

Allows exact determination of pressure drop across element. Divided into three sections, each marked for easy understanding. The differential pressure gauge is the best tool available for determining element maintenance requirements.

Color	Indicates	Pressure Drop
Green	Clean	0-6 psi
Yellow	Change	6-9 psi
Red	Dirty	9-12 psi

Maximum Pressure:

- 300 psig / 20 bar

Maximum Temperature:

- 200° F / 93° C

Weight:

- .33 Lb. / 1.5 Kg

Bolt Threads:

- 3/8 - 24 Inches

Bolt Material:

- Glass filled Nylon

GAUGE MODELS

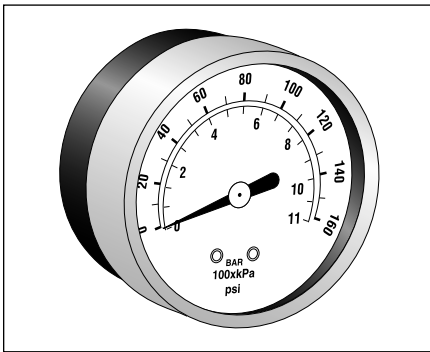
- DP10-A* - Replacement unit only
Basic model with 3/8-24 slotted bolts
- DP10-AE*
Basic model with 3/8-24 slotted bolts and Reed Switch
- DP10-B
Gauge with Remote Mounting Block
- DP10-BE
Gauge with Remote Mounting Block and Reed Switch

KITS AND ACCESSORIES

- MK-10
Mounting Kit for vertical or wall mounting
- TK-10
1/4" Tubing Kit with Connector Fittings

* Model No. DP10-A & DP10-AE to mount directly on existing filter head for replacement only.
** Model No. DP10-B & DP10-BE remote model with slotted bolts & mounting block.
Note: To order pre-mounted units, adds suffix "D" to filter #.

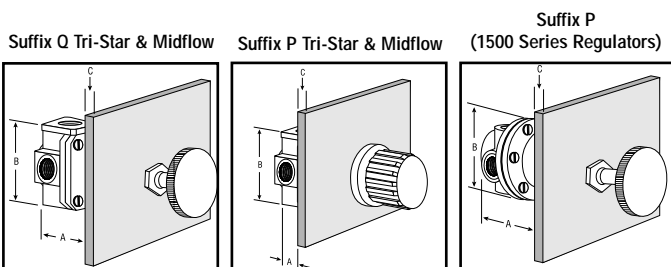
Pressure Gauges



PART NO.	DESCRIPTION	PRESSURE RANGE	USED ON
1481C	2" face, 1/4" center back mount	0-30 psi	Tri-Star Tri-Star II High Flow
1481A	2" face, 1/4" center back mount	0-60 psi	
1481	2" face, 1/4" center back mount	0-160 psi	
1481B	2" face, 1/4" center back mount	0-300 psi	
1681C	1 1/2" face, 1/8" center back mount	0-30 psi	Mini Regulators and Mini Integral
1681A	1 1/2" face, 1/8" center back mount	0-60 psi	
1681	1 1/2" face, 1/8" center back mount	0-160 psi	

Regulator Accessories

Arrow regulators may be panel mounted to improve machine design and overall appearance, they are convenient for control panel or console mounting.



Panel Mounting Regulators					
Regulator Model	Suffix for Panel Mt.	Panel Hole Size	Dimensions & Max.		
			A	B	C
Tri-Star, Midflow & Precision Series	P	1 3/16"	1 1/4"	2 22/32"	1 1/2"
Tri-Star, Midflow & Precision Series	Q	9/16"	3 1/2"	2 23/32"	5/16"
1588	P	3/4"	5"	4 3/4"	1/4"